

Nancy-Universität - INPL

Institut National Polytechnique de Lorraine (INPL) is a public University of Technology and a member of the 'Nancy Université' federation. INPL has 28 research laboratories dedicated to teaching and to research, integrating the latest technological innovations.



<http://english.inpl-nancy.fr/>

TU Bergakademie Freiberg

The TU Bergakademie Freiberg's central concept is to endeavor in research areas that respond to the demands of industry. With its four core themes - Geosciences, Materials, Energy and Environment, it has a very distinct profile addressing the specific issues of our modern industrial world.



<http://tu-freiberg.de/>

gOcad

gOcad is a world leading enterprise of geomodeling featuring the common Earth model aiming at a unique approach to geometry, topology and properties. It is a software package, a scientific project, and a business run by Paradigm Geophysics.

gOcad was developed by the gOcad Consortium which is a multidisciplinary team of researchers striving to define new approaches to build and update 3D subsurface models.



<http://www.gocad.org/www/>

ProMine

ProMine is an EU FP7 research project working to integrate the mapping of metal and mineral resources across the Union, to produce the first pan-European GIS-based database. On from this, new sustainable extraction and processing technologies are being developed along with a range of new nano products manufactured from European sourced raw materials. The ProMine project seeks to employ an inclusive and consultative approach, with an aim to improve the image of mining whilst reinforcing industrial links. Particular attention is being paid to long term sustainability and environmental concerns, reflecting current directives from the Raw Materials Initiative.

The project commenced on May 1st 2009, and is coordinated by the Geological Survey of Finland (GTK), and made up of 27 partners in 11 countries working closely together over a four year period.

<http://promine.gtk.fi>



Workshop on: *Mineral Resources Potential Maps: A Tool for Discovering Future Deposits*

12th - 14th March, 2012

Nancy, France

INPL-Nancy - ENSG

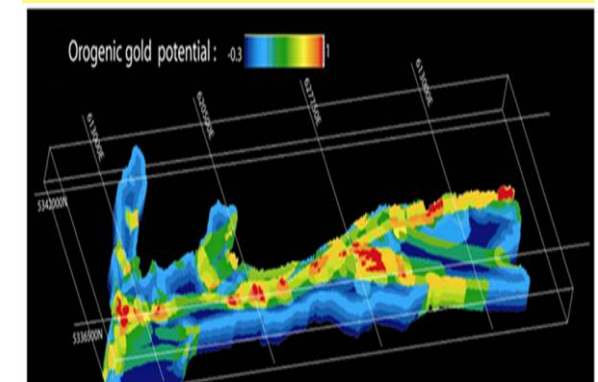
Rue du Doyen Marcel Roubault

F54501 Vandoeuvre-lès-Nancy

Field trip:

15th - 16th March 2012

Nancy-Universität
INPL



Potential orogenic gold occurrences, Abitibi, Québec.

SCOPE

The scope of the workshop is to provide practitioners from the exploration and mining industry theoretical concepts in predictive methods for defining potential maps. The objectives of the workshop is to debate advanced 3&4D predictive methods to derive potential maps in mineral exploration for strategic metals that are currently not extracted in Europe. This includes all types of information, GIS database, surface surveys, 3&4 models, etc. The workshop will focus both on advanced theoretical methods including weight of evidence, characteristic analysis, probability maps but also on successful and less successful case study stories. It aims at putting together specialists from all origins in a unique three day meeting to discuss future trends and success & limits in applying these predictive methods at a mineral exploration stage.

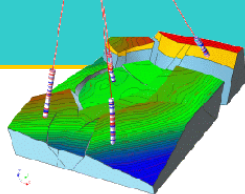
Keynote speakers recognized as experts in their field from different countries including Europe, Canada, US, and Australia will be invited. Participants will be asked to send a written contribution that will be submitted for peer review. The Scientific Program will include round tables and time for discussion, which will be synthesized by the workshop conveners.

Following the event, the results of the workshop are planned to be published. A two day field trip will be organized after the workshop including a visit to the old iron and coal mines in the north part of Lorraine together with the nuclear waste site at Bure.

The workshop will be conducted in English. Due to room capacity, the number of participants is limited to a maximum of around 50.

Location: Nancy INPL, France

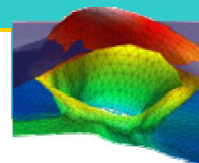
Coorganizers: INPL-Nancy, TUBaf Freiberg



SCIENTIFIC COMMITTEE

Daniel Cassard
Steinar Ellefmo
Gaál Gabor
Vesa Nykanen
Jean-Jacques Royer
Richard Sinding Larsen
Helmut Schaeben
Pär Weihed

BRGM, France
TNU, Norway
GTK, Finland
GTK, Finland
INPL-Nancy, France
TNU, Norway
TUBAF, Germany
Lulea Univ., Sweden



ORGANIZERS

Jean-Jacques Royer (Centre National de la Recherche Scientifique, CNRS),

Helmut Schaeben (Geoscience Mathematics and Informatics Group, TU Bergakademie Freiberg).

VENUE & TRAVEL DIRECTIONS

The workshop will be hold at:

Ecole Nationale Supérieure de Géologie,
Bat G, Rue du Doyen Marcel Roubault, BP 40,
F 54501 Vandoeuvre-Lès-Nancy.

By plane to Nancy-Metz Airport, or Paris, or Luxembourg, take the train or the shuttle bus and then the Tram (*see map location on website below*).

ACCOMMODATION

Rooms can be reserved at:

Ibis Hotel, Cottage Hotel, and Campanile Hotel nearby INPL, or downtown (*see website below*).

Reservations should be made directly by the participant.

For further assistance do not hesitate to contact:
fatima.chtioui@gocad.org

COURSE FEES & REGISTRATION

The workshop is offered free to ProMine partners. A contribution of 150€ will asked for the field trip.

Fees for other attendees is 300€ covering hand-outs, meals and field trip.

Deadlines:

15 January 2012: Abstract submission

31st January 2012: Notification to authors

15th February 2012: Manuscripts due

Abstracts and papers must be submitted to:

royer@gocad.org

To register, please send an email before

February 15th, 2012 to:

fatima.chtioui@gocad.org

More information on website

<http://www.gocad.org/promine/>

